

# Ztools

Avery Weigh-Tronix

*Ztools 2.0 configuration utility provides unprecedented application development for programmable indicators*

## *Ztools:*

- › Programmable indicators now use an IDE (Integrated Development Environment)
- › Code editing with Zedit
- › Leading edge application development with Lua script language support
- › Legacy Macro programming support
- › Import Legacy Macro applications re-utilizing development investment
- › Product Simulation with Zsim
- › Interactive application debugging with Zedit
- › Multiple window environment optimizes supporting multiple monitor PC configurations
- › Best in class code reuse
- › Optimize development to increase ROI



## **Ztools features**

- › Application development for Lua or Macros
- › Product simulation
- › Scale setup
- › Serial Port setup
- › Ethernet setup
- › Protocol setup
- › Advanced Setpoint setup
- › Printer and PLC setup
- › Print Format Editor
- › Region Specific setup
- › Security (source code and upload)



## Avery Weigh-Tronix

# Zedit

**Zedit provides program editing for Lua application programs. Standard features include:**

- › Project Explorer
- › Console Window
- › Integrated Debugger for Lua
- › Syntax Highlighting (Color coded functions, comments, variables)
- › Intelligent code completion
- › Comprehensive search and replace
- › Function outline window



# Zsim

**Zsim: Product simulation is just the beginning**

- › Debugging – Break points, variable watch, single stepping
- › Setpoint simulation via the Setpoint Monitor
- › Serial port simulation using the serial port monitor or use the host PC port(s)
- › Sales tool – Raise the bar on your presentation with astonishing graphics or full product demonstration either face to face or over a remote desktop session
- › Training tool – Enhance product knowledge by accessing setup menus and simulate product functionality without the need for a product



## Debugger

### Features:

- › Debugging – Break points, variable watch, single stepping
- › Setpoint simulation via the Setpoint Monitor

### Benefits:

- › Faster development times = faster deliveries = more satisfied customer
- › Higher quality code generation = more satisfied customers
- › Troubleshooting = better equipped for post sale support = more satisfied customer



# Software Programming

## Lua:

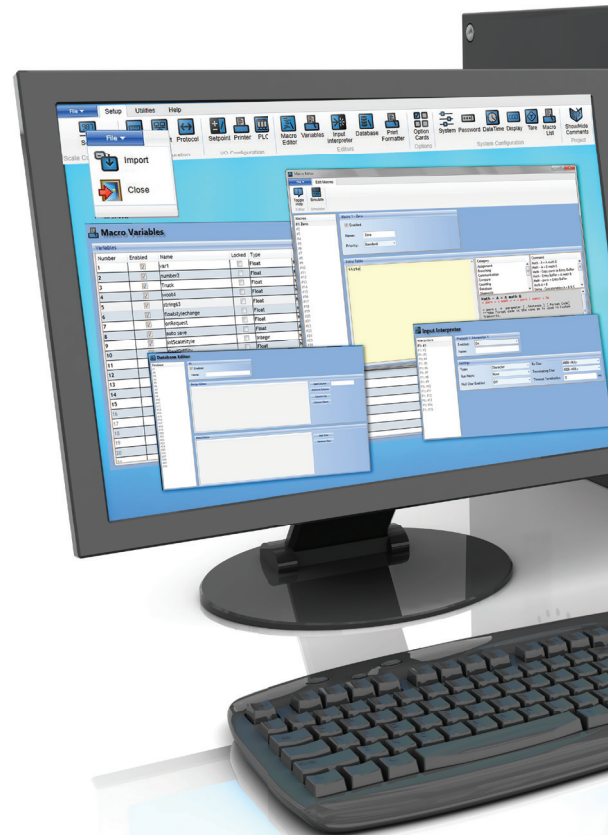
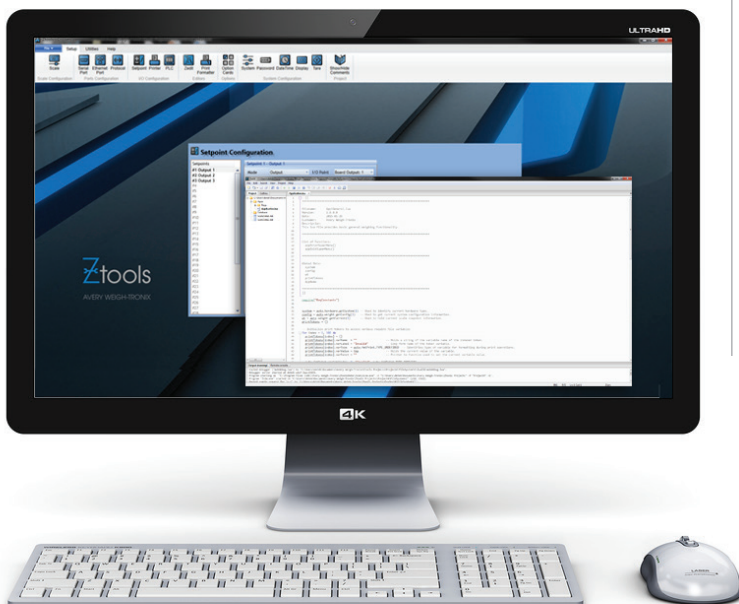
### Features

- › Lua – Open source programming for non-programmers
- › Endless possibilities for creating custom solutions for inventory management, process control, IoT communications, and truck scales
- › Globally used in many industries, many online resources for on-demand training
- › Custom API developed by Avery Weigh-Tronix to support the scale industry
- › Object oriented, code reuse for faster development can minimize testing
- › Lua program simulation with Zsim
- › Debugging with Zedit and Zsim

## Macro:

### Features

- › “%” Macro commands
- › Parameters
- › Import existing setup text file, exported from Rabbet
- › Macro Simulation with Zsim
- › More Macros to adapt your Legacy application to the new ZM series
- › Expanded Setpoints to grow existing applications
- › Macro Editor, Input Interpreters, Database Editor, Variable Editor similar to Rabbet





## PC requirements for Ztools

### Minimum:

- › CPU: Intel i3
- › RAM: 2GB
- › Hard Drive: 500GB
- › Video Card: 512MB Integrated
- › Display: 15.6 inch display
- › Resolution: 1366x768
- › OS: Windows 7 Home, Windows 8.0 Home, Windows 8.1 Home, Windows 10 Home
- › Communications: 100/1000 Ethernet
- › Optical Drive: CD/DVD

### Recommended:

- › CPU: Intel i5
- › RAM: 4GB
- › Hard Drive: 500GB
- › Video Card: 512MB Integrated
- › Display: >15.6 inch display
- › Resolution: 1366x768
- › OS: Windows 7 Home, Windows 8.0 Home, Windows 8.1 Home, Windows 10 Home
- › Communications: 100/1000 Ethernet
- › Optical Drive: CD/DVD
- › Two 21" monitors

### Top of the line:

- › CPU: Intel i7
- › RAM: >4GB
- › Hard Drive: >500GB
- › Video Card: 1024MB Dedicated Video Card
- › Display: >15.6 inch display
- › Resolution: 1920 x 1080
- › OS: Windows 7 Pro, Windows 8.0 Pro, Windows 8.1 Pro, Windows 10 Pro
- › Communications: 100/1000 Ethernet
- › Optical Drive: CD/DVD
- › Three 27" IPS Monitors



### More online



[www.averyweigh-tronix.com/indicators](http://www.averyweigh-tronix.com/indicators)

- › Technical specifications
- › User manuals
- › Breaking information

# Avery Weigh-Tronix

[www.averyweigh-tronix.com](http://www.averyweigh-tronix.com)

**Avery Weigh-Tronix is an ITW company**



Intel and Intel Core are trademarks of Intel Corporation in the U.S. and/or other countries. Windows is a Registered Trademark of Microsoft.

Avery Weigh-Tronix is a trademark of the Illinois Tool Works group of companies whose ultimate parent company is Illinois Tool Works Inc ("Illinois Tool Works"). Copyright © 2015 Illinois Tool Works. All rights reserved. This publication is issued to provide outline information only and may not be regarded as a representation relating to the products or services concerned. This publication was correct at the time of going to print, however Avery Weigh-Tronix reserves the right to alter without notice the specification, design, price or conditions of supply of any product or service at any time.

ztools\_spec\_501522.indd  
V1 AWT35-501522