

Avery Weigh-Tronix



Floor Scales

Mild and stainless steel floor scales suitable for every application.

Built to Last

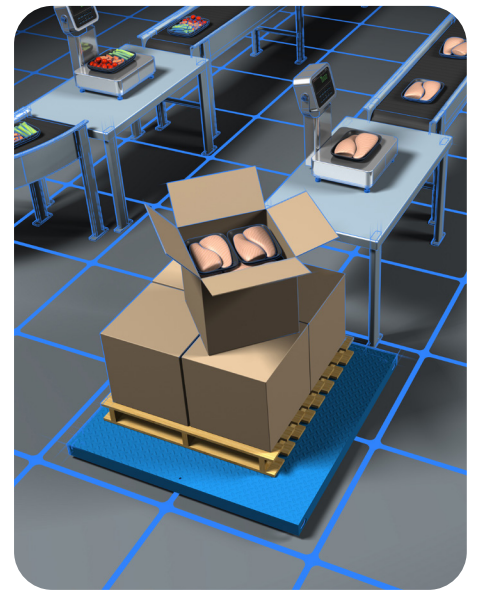
Designed for maximum strength and flexibility

Avery Weigh-Tronix offers some of the best floor scales in the world – robust, accurate and built to last. With over 200 years of weighing industry expertise behind them, the floor scales are designed for maximum strength and flexibility and are suitable for every application. Avery Weigh-Tronix floor scales are easy to install, use and maintain, so they won't slow your business down.

Built for Strength and Reliability

Designed to perform well within the yield strength of the steel used. The virtually indestructible DS and MaxDec models utilize a unique self leveling chain link design, ideal for the harshest environments. The lower profile models (LP and ProDec) are designed for superior deck strength, reducing deck deformation when constantly loaded and unloaded.

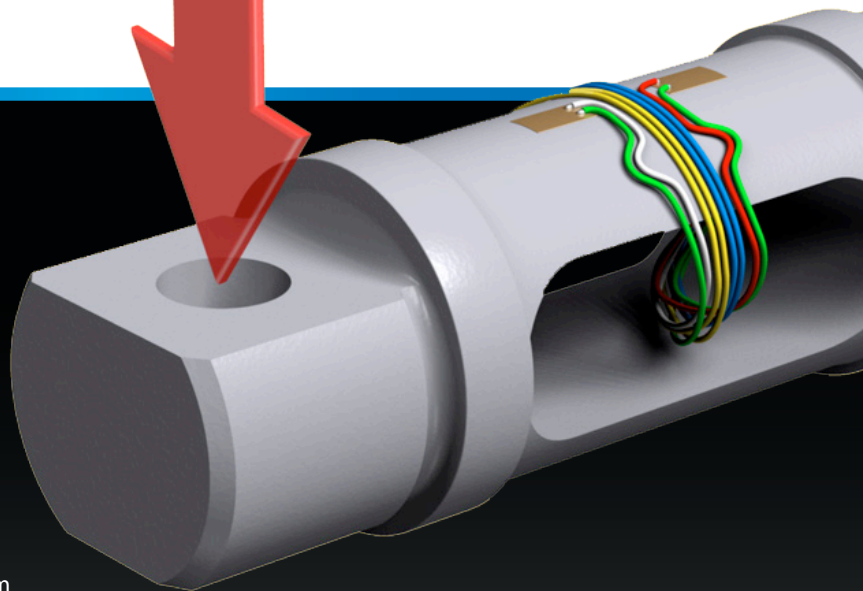
Avery Weigh-Tronix



The Avery Weigh-Tronix Weigh Bar®. Accuracy and strength in one unique package.

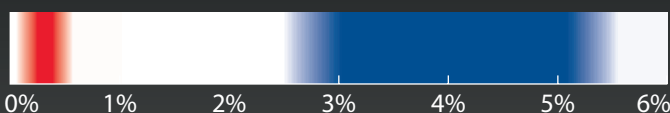
The Weigh Bar® is designed to overcome the shortcomings of the load cell and to provide the user with a rugged, highly reliable and linear load sensing device at a reasonable cost.

- › NTEP approved to 5000 d
- › Immune to side loads, end loads and twisting
- › Inherent strength and overload protection in the design with gauges on the outside of the bar
- › More robust than a shear beam load cell for a given output
- › Lower failure rate versus load cells: less prone to damage from impact and maximum design protection from vibration



Annual Load Cell Failure Rate Percentage of total installed population

■ Weigh Bar
■ Other Models



Built for Accuracy

Avery Weigh-Tronix floor scales can deliver exactly the accuracy you require for your particular application. Scales are fitted with the Weigh Bar® weight sensor, which allows the scales to remain accurate to 5,000 divisions while providing outstanding side/end loading protection and shock loading protection, common in most industrial environments.

Built for easy loading

All Avery Weigh-Tronix floor scales are available with ramps to allow loads to be driven or wheeled on easily and safely. The ProDec and Deck Scale can also be pit mounted for situations where space is an issue. The LP, low profile scale and the drum weigher, are designed to be low to the ground, and do not need to be pit mounted, minimizing installation time and allowing the scale to be moved when requirements change.

Built for safety

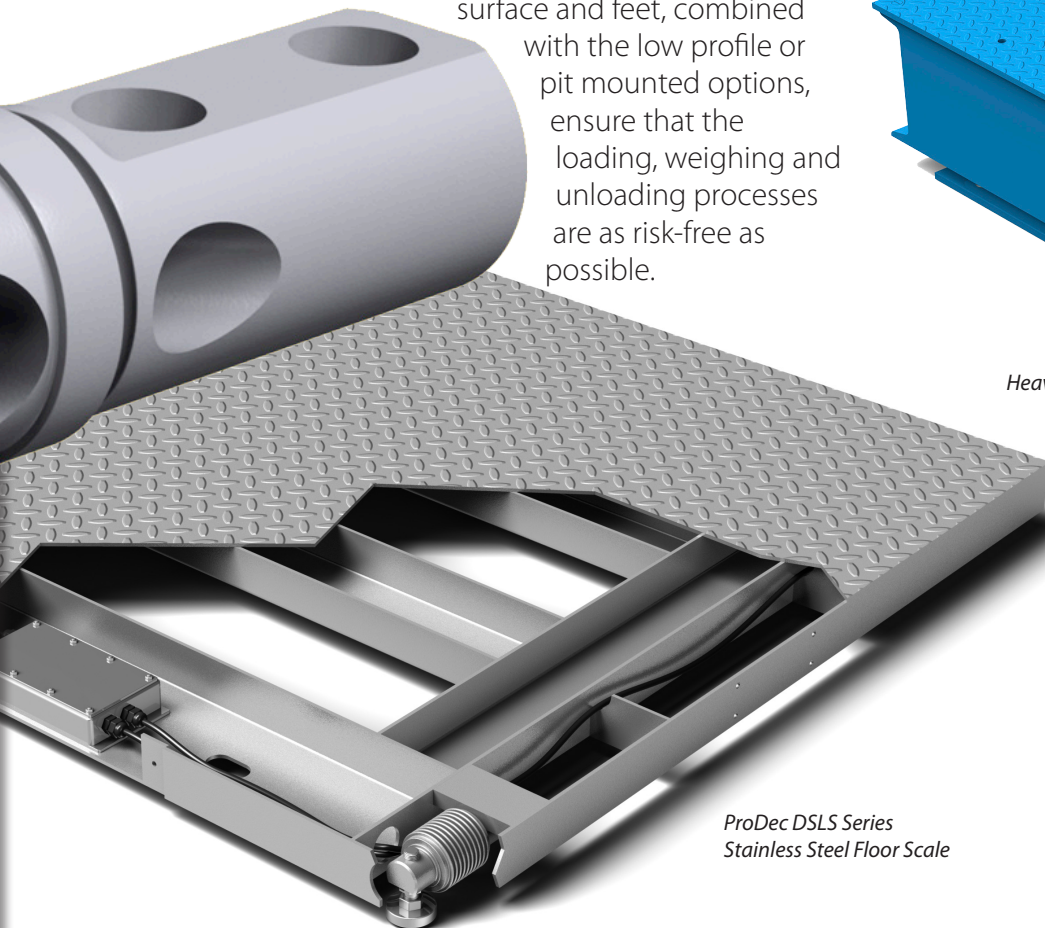
Avery Weigh-Tronix floor scales are also designed with workplace safety in mind. The non-slip scale surface and feet, combined with the low profile or pit mounted options, ensure that the loading, weighing and unloading processes are as risk-free as possible.

Built for Every Application

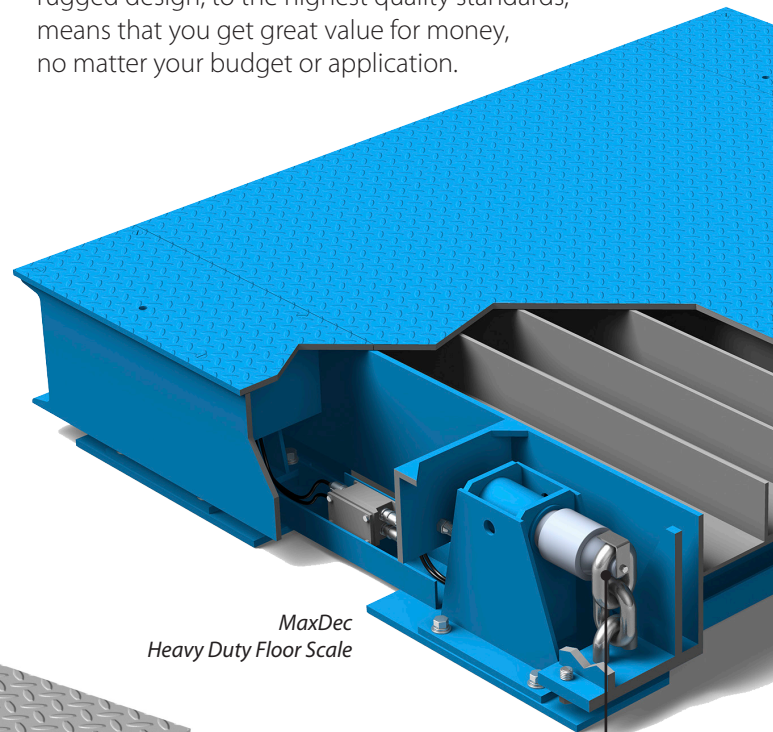
From small (24" x 24") to large (120" x 120") and all the way up to 100,000 lb capacity, there is an Avery Weigh-Tronix floor scale for virtually every application. If one of our standard sizes doesn't work, the unique design of the ProDec allows us to supply it in custom sizes, for special applications or existing pits.

Built to Last

From the tough, anti-slip safety tread plate to the hard wearing powder coat finish, Avery Weigh-Tronix scales are built for today's unrelenting industrial environments. A rugged design, to the highest quality standards, means that you get great value for money, no matter your budget or application.



ProDec DSLS Series
Stainless Steel Floor Scale



MaxDec
Heavy Duty Floor Scale

Once bolted to the ground the unique chain link design used on the DS, MaxDec and the LP range, makes bent feet and damaged load cells a thing of the past. These scales are very low maintenance due to their ability to allow the top deck to swing out of the way, taking all the side forces away from the weigh bars.

SPECIFICATIONS

| | Pancake Cargo Scale | Drum Weigher | ProDec | FCQH | Deck Scale | MaxDec |
|--|--------------------------------|---------------------|------------------|------------------|-------------------|-------------------|
| USAGE | | | | | | |
| <i>Ideal for daily usage</i> | • | • | • | • | • | • |
| <i>Ideal for constant usage</i> | • | • | • | • | • | • |
| <i>Ideal for more robust applications</i> | • | | • | • | • | • |
| <i>Ideal for heavy-duty applications</i> | | | | | • | • |
| <i>Ideal for washdown environments</i> | | | | • | | |
| INSTALLATION OPTIONS | | | | | | |
| <i>Low profile</i> | • | • | | | | |
| <i>Portable</i> | • | • | | | | |
| <i>Ramp options</i> | Up to 4 | | Up to 4 | Up to 4 | | |
| <i>Surface mounted</i> | • | • | • | • | • | • |
| <i>Bumper rails</i> | | | • | • | | |
| <i>Pit mounted</i> | | | • | • | • | • |
| <i>Bolt down chain link foot</i> | | | | | • | • |
| DECK SIZE (INCHES) & MINIMUM SHIPPING WEIGHT(LBS.) & FINISHES | | | | | | |
| | 120 x 120 (4,500) | 30 x 30 (150) | 30 x 30 (176) | 30 x 30 (176) | 24 x 24 (130) | 60 x 60 (2700) |
| | | | 36 x 36 (390) | 36 x 36 (390) | 30 x 30 (225) | 72 x 60 (3040) |
| | | | 48 x 48 (338) | 48 x 48 (338) | 48 x 48 (530) | 72 x 72 (3370) |
| | | | 60 x 48 (391) | 60 x 48 (391) | 72 x 48 (930) | 84 x 72 (3700) |
| | | | 72 x 48 (456) | 72 x 48 (456) | 60 x 60 (710) | 96 x 72 (4040) |
| | | | 60 x 60 (484) | 60 x 60 (484) | 72 x 60 (930) | |
| | | | 96 x 48 (510) | 96 x 48 (510) | 84 x 60 (1130) | |
| | | | 72 x 60 (484) | | 96 x 72 (1450) | |
| | | | 84 x 60 (746) | | | |
| | | | 72 x 72 (715) | | | |
| | | | 84 x 72 (717) | | | |
| | | | 96 x 72 (873) | | | |
| <i>Custom sizes available</i> | | | • | • | | |
| <i>Deck height (inches)</i> | 4.0" | 3.5" | 3.31" to 5" | 3.31" to 5" | 4.6" to 8" | 15.4" |
| <i>Stainless Steel</i> | | • | • | • | • | |
| <i>Carbon Steel</i> | • | • | • | • | • | • |
| CAPACITIES UP TO | 20,000 lb | 1,000 lb | 20,000 lb | 20,000 lb | 20,000 lb | 100,000 lb |
| <i>NTEP legal for trade 5000d</i> | • | • | • | • | • | • |
| PLATFORM STRENGTH | | | | | | |
| <i>Evenly distributed load</i> | up to 20,000 lb | | up to 10,000 lb | up to 10,000 lb | up to 20,000 lb | up to 100,000 lb |
| SAFE AXLE LOADING | | | | | | |
| <i>1,000 lb</i> | | 500 lb | | | | |
| <i>2,000 lb</i> | | | | | | |
| <i>5,000 lb</i> | | | 3,300 lb | 3,300 lb | | |
| <i>10,000 lb</i> | | | 5,000 lb | 5,000 lb | 5,000 lb | |
| <i>20,000 lb</i> | 10,000 lb | | 10,000 lb | | 10,000 lb | |
| <i>40,000 lb</i> | | | | | | |
| <i>50,000 lb</i> | | | | | | 50,000 lb |

Avery Weigh-Tronix

www.averyweigh-tronix.com

Avery Weigh-Tronix is an ITW company



Avery Weigh-Tronix is a trademark of the Illinois Tool Works group of companies whose ultimate parent company is Illinois Tool Works Inc. ("Illinois Tool Works"). Copyright © 2023 Illinois Tool Works. All rights reserved. This publication is issued to provide outline information only and may not be regarded as a representation relating to the products or services concerned. This publication was correct at the time of going to print, however Avery Weigh-Tronix reserves the right to alter without notice the specification, design, price or conditions of supply of any product or service at any time.