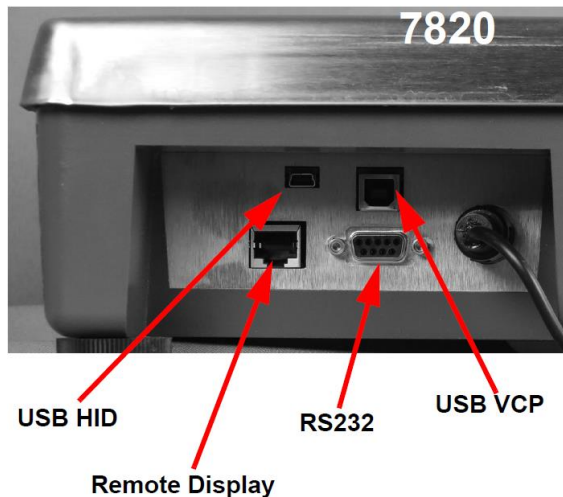


Product: 7800 Series**Tech Guide: USB VCP Device Driver Installation**

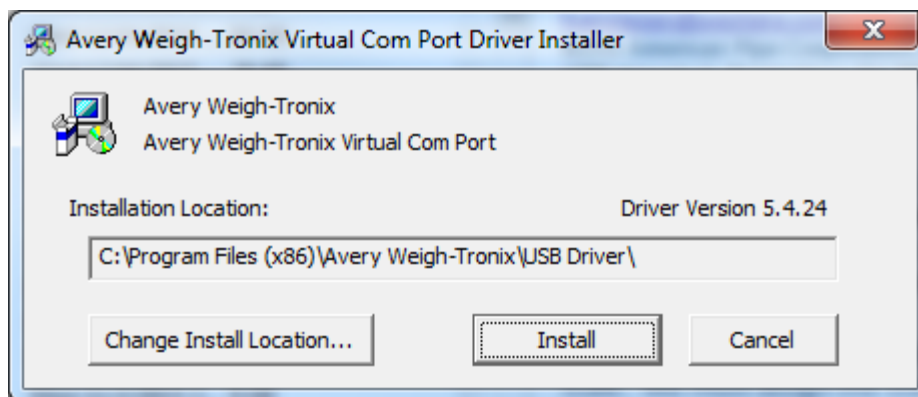
Introduction

This provides details on how to install the necessary USB VCP device drivers on to the Microsoft Windows OS to communicate to the 7800 series scale.

**Procedure**

Before installing the USB VCP device drivers on to the computer, please ensure the USB cable is not connected to the 7800 series scale

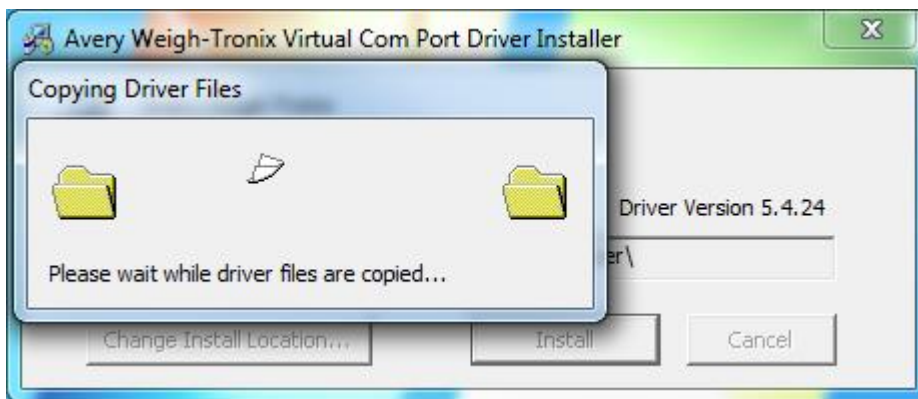
1. Launch the **7800VCPInstaller.exe** from the **AWTX_7800_USB_VCP_Device_Driver** directory



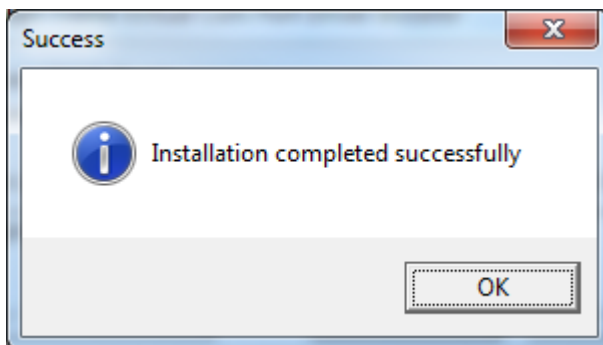
- 2.
3. Click on **Install**
4. The installer will verify software is not installed. This can take a few minutes.



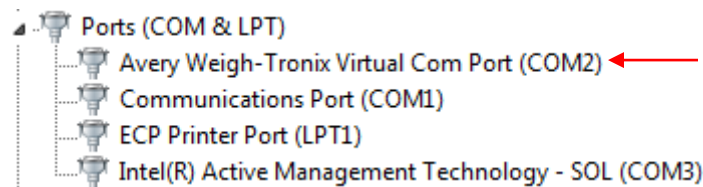
- 5.
6. Once the scan is complete, the installer will copy over the necessary files



- 7.
8. When the installation is complete the **Success** box will appear, press **OK**



- 9.
10. Plug in the 7800 series USB VCP cable in to the available USB port on the computer.
11. The computer will automatically install the device driver and assign a COM port to it.
12. To determine the COM Port number. Launch **Device Manager**, under **Ports (COM & LPT)** the 7800 series scale will be labeled **Avery Weigh-Tronix Virtual Com Port**. The COM is listed in () see below example.



13. To test the scale, please use a terminal emulation program to connect to the COM port to communicate to the 7800 series scale. Default COM settings **9600,7,E,1,None**

NCI Serial Communications Protocol

Symbol Key:

<ETX>	End of text character (03 hex)
<LF>	Line feed character (0A hex)
<CR>	Carriage return character (0D hex)
<SP>	Space (20 hex)
x	Character from display including minus sign.
hh	Two status bytes
uu	Unit of measure (lb, kg, oz, g, etc. using ANSI standard abbreviations)

Standard Commands:

W<CR>

Scale Response

<LF>xxxx.xxuu<CR>

<LF>hh<CR><ETX>

Results

Returns decimal weight with units plus scale status.

S<CR>

Scale Response

<LF>hh<CR><ETX>

Results

Returns to scale status.

For additional commands please refer to the 7800 Series user's manual.

<http://www.averyweigh-tronix.com/>