

ZP900 POS.Net

Introduction

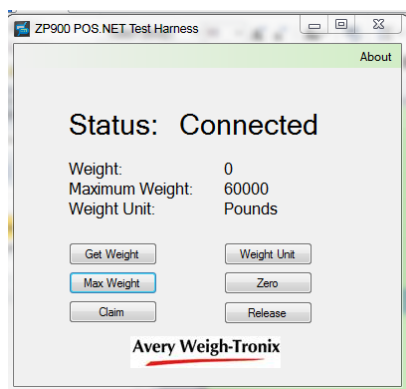
The POS.Net Service Object (SO) been developed to work under Windows 95 thru to Windows 8. The Service Object is 32 bit driver but works under 64 bit environments.

Installation

Install the Microsoft POS.Net framework (POSforDotNet-1.14.msi).

Install the Avery Weigh-Tronix UPOS driver. This will install the driver “ZP900 Scale SO.dll” in “Program Files (86x)\Common Files\microsoft shared\Point of Service\Control Assemblies” directory.

Install the POS.Net sample scale application. This will install a primitive app that can be used to verify the driver installation and scale communications is correct.



UPOS Support

In line with the UPOS specification the SO driver supports an event for detecting a scale device connected via USB being plugged in / out. It is the responsibility of the application designer to create a handler for this event.

UPOS Supported Properties

Common	Type	Mutability	May Use After
--------	------	------------	---------------

Claimed	Boolean	Read-only	Open
CapZeroScale	Boolean	Read-only	Open
MaximumWeight	Int32	Read-only	Open
ScaleLiveWeight	Int32	Read-only	Open
WeightUnit	Int32	Read-only	Open
DeviceDescription	String	Read-only	Open
DeviceEnabled	Boolean	Read-Write	Open

UPOS Supported Methods

Common	Type In	Type Out	May Use After
Open	LogicalDeviceName (String)		anytime
Close ()			Open
Claim()	Timeout(Int32)		Open
Release()			Open, Claim
ReadWeight()	Timeout(Int32)	Int32	Open, Claim, Enable
ZeroScale			Open, Claim, Enable