

# 7800 OPOS

---

## Introduction

The OPOS Service Object (SO) been developed to work under Windows 95 thru to Windows 8. The Service Object is 32 bit driver but works under 64 bit environments.

## Installation

There are two installation packages 32 and 64 bit. The installation package creates a scale profile in the registry, installs a driver for talking to the 7800 and installs a test harness. The test harness can be used to verify that that the driver has been correctly installed and the profile

## Device Profile Registry Settings

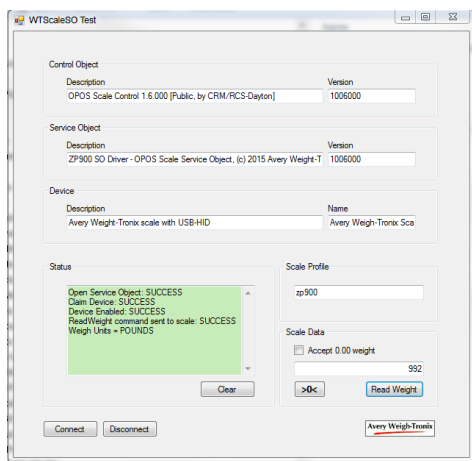
The device profile is stored in the Window registry under a known key as specified by the OPOS specification.

HKEY\_LOCAL\_MACHINE\SOFTWARE\OLEforRetail\ServiceOPOS

The installation will have created a profile for the ZP900 called “zp900”.

## Test Harness

Enter the name of the profile (zp900) into the scale profile. Then press the “Connect” button and check the status.



## OPOS Support

In line with the OPOS specification the SO driver does not support any mechanisms for detecting a scale device connected via USB being plugged in / out. It is the responsibility of the application designer to handle this event.

## Scale Commands and Properties

Name	May Use After
CheckHealth	Open, Claim & Enable
ClaimDevice	Open
ClearInput	Not implemented
CloseService	Open
COFreezeEvents	Not implemented
DirectIO	Implemented
DisplayText	Not implemented
GetOpenResult	
GetPropertyNumber	
GetPropertyString	
GetSalesPrice	Not implemented
GetUnitPrice	Not implemented
OpenService	
ReadWeight	Open, Claim & Enable
ReleaseDevice	Open & Claim
SetPropertyNumber	
SetPropertyString	
SetUnitPrice	Not implemented
ZeroScale	Open, Claim & Enable
UnitPrice	Not implemented
SalesPrice	Not implemented
WeightUnit	Open
WeightUnits	Open