

Fully washdown stainless steel torsion bench bases designed for use within the food industry.

Technical Specification

DESCRIPTION

Certified by NSF to NSF/ANSI Standard 3-A, the torsion base BSF and BSG are ideal bench bases for use within all types of food environments.

The rugged torsion base design and innovative Breakaway Load Transfer system help to transfer shock loads and overloads away from the load cell, offering up to 500%

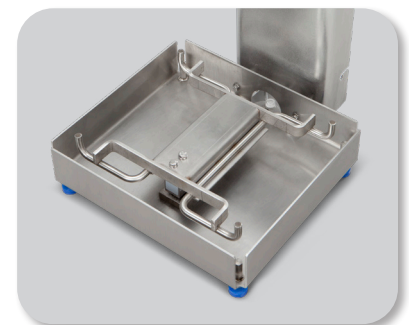
overload protection and guaranteeing accuracy and reliability even in the toughest environments.

Legal for trade and available in a range of base sizes, accuracies and capacities, this fully washdown IP69K torsion bench base is stainless steel and constructed with minimal food trap areas for ease of cleaning.

SPECIFICATIONS

PHYSICAL

Operating Application	Designed to operate in a wide range of food processing environments, from meat, fish, poultry and dairy to dry food applications.
Load Cell	Fitted with fully IP69K or IP65 /NEMA4X fully stainless steel NTEP approved load cell / (C3 R 60 OIML approved). Supplied with a 6 wire 10 ft (3 meter) load cell cable
Base Construction	Easy to clean, Certified by NSF to NSF/ANSI Standard 3-A. Full stainless steel design, constructed from a food-grade 304 brushed base with a pickle and electro polish weigh pan ideal for food contact areas. Designed with a breakaway load transfer system to help fully protect the load cells from unwanted overloads and shock loads.
Operating Temperature	Compliance with legal for trade requirements -4° F to 140° F / -20° C to 60° C (industrial) 10 to 90% humidity
Load Cell Output	2 mV/V
Feet Adjustment	Captive thread food grade feet with up to ¼" (6mm) foot adjustment
Overload Protection	500%
Corner Loading	100%
IP Protection	Available in two torsion bench base models: Torsion base BSG IP65 (NEIMA 4X) Torsion base BSF IP69K
Approved Accuracy	Model BSG 3000d NTEP (3000d EC /OIML) Model BSF 5000d NTEP and Measurement Canada (3000d EC/ OIML)



Base construction

BSF/BSG TORSION BASES *Technical Specification*

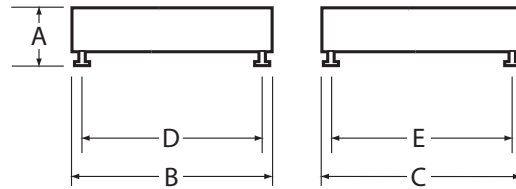
BASE CAPACITY/RESOLUTION	<i>Base size</i>	<i>Resolution (North America)</i>	<i>Resolution (Europe)</i>
IP66 BSG Torsion base NEMA 4X	8.75" x 8.75" (220mm x 220mm)	6 x 0.002 lb (3 x 0.001kg)	3 x 0.001 kg
		12 x 0.005 lb (6 x 0.002 kg)	6 x 0.002 kg
	12" x 14" (310mm x 350mm)	30 x 0.01 lb (15 x 0.005 kg)	15 x 0.005 kg
		60 x 0.02 lb (30 x 0.01 kg)	30 x 0.01 kg
		100 x 0.05 lb (45 x 0.02 kg)	45 x 0.02 kg
IP69K BSF Torsion base	8.75" x 8.75" (220mm x 220mm)	5 x 0.001 lb (2.5 x 0.005 kg)	3 x 0.001 kg
		10 x 0.002 lb (5 x 0.001 kg)	6 x 0.002 kg
	12" x 14" (310mm x 350mm)	25 x 0.005 lb (10 x 0.002 kg)	15 x 0.005 kg
		50 x 0.01 lb (25 x 0.005 kg)	30 x 0.01 kg
		100 x 0.02 lb (45 x 0.01 kg)	60 x 0.02 kg

DIMENSIONS (inches)

Base Size	a	b	c	d	e
8.75" x 8.75"	3.70	8.75	8.75	6.63	6.63
12" x 14"	4.30	13.75	12.25	10	11.50

DIMENSIONS (mm)

Base Size	a	b	c	d	e
220mm x 220mm	94	222	222	168	168
310mm x 350mm	110	349	311	225	292



APPROVALS

Agencies

NTEP (US) Class 111/IIIL 5,000 d (BSF: CC# 11-035); (BSG: CC# 03-067)
 AM (Measurement Canada) (BSF: AM# 5864)
 OIML / EC Class III 3,000 d
 Certified by NSF to NSF/ANSI Standard 3-A 14159-1-2010
 IP69K approved



Measurement
Canada Approved

Avery Weigh-Tronix

www.averyweigh-tronix.com

Avery Weigh-Tronix is an ITW company



Avery Weigh-Tronix is a trademark of the Illinois Tool Works group of companies whose ultimate parent company is Illinois Tool Works Inc ("Illinois Tool Works"). Copyright © 2019 Illinois Tool Works. All rights reserved. This publication is issued to provide outline information only and may not be regarded as a representation relating to the products or services concerned. This publication was correct at the time of going to print, however Avery Weigh-Tronix reserves the right to alter without notice the specification, design, price or conditions of supply of any product or service at any time.

torsionBSFBSG_spec_500856.indd
V4 AWT35-500856