

I-LINE 2

Advanced Data Management System for Rail Freight Operators

I-LINE 2 is a state-of-the-art data management software specifically designed for rail freight operators to maximise efficiency and streamline processes.

BENEFITS



One of the key benefits of I-LINE2 is its ability to monitor imbalance and overloading. The software's interactive wagon display visually alerts users to overloads, over-speeds, and imbalances between bogies, axles, and wheels. This feature enables users to quickly identify problems and take corrective action to prevent derailment and ensure safe train loading. While the latest 'Train Merge' function enables users to merge up to five trains quickly and seamlessly, allowing for better optimisation of resources in depots where space is limited.

I-LINE2 also offers effective inventory management by allowing users to store detailed weights of individual commodities as they enter or leave by train. The software's dashboard gives a detailed visual overview of train weight information, with errors being quickly identified and flagged with the system's red and green colour coding. Individual wagon information is just one click away, allowing for easy navigation to detailed wagon information, including commodity type.



THE POWER OF DATA



Utilising weighing data from bulk and containerised rail shipments captured by Railweight's track-based weighing systems, the intuitive analytics and reporting tools in the I-LINE2 dashboard make it easy to monitor and manage operations in real time, offering easy visualisation and analysis of freight operations across single or multiple sites.

This data can be used to make informed decisions about the performance, maintenance, and safety of the rail network, as well as providing valuable insights into the cost-effectiveness of operations.

KEY FEATURES



Highly accurate reporting of real-time train weight data on bulk and containerised rail shipments



User-friendly interface for easy visualisation and analysis of freight operations across single or multiple sites



Weight information provided in tabular and graphical formats, exportable as .xml files, .pdf files or serial data



Interactive wagon display to monitor imbalance and overloading, enabling quick identification of problems and corrective action



Effective inventory management, allowing users to store detailed weights of commodities as they enter or leave by train



Detailed visual overview of train weight information with errors quickly identified and flagged



Automatic alerting and reporting by email or SMS on key events, such as when a train is weighed



Support for multiple devices and weighing instruments



Automatic incorporation of train identification numbers (via AVI/RFID)



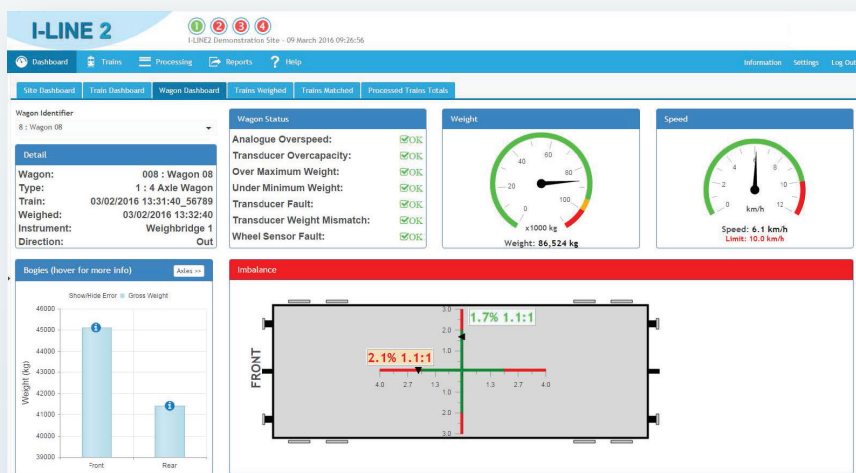
Fully translatable into most languages



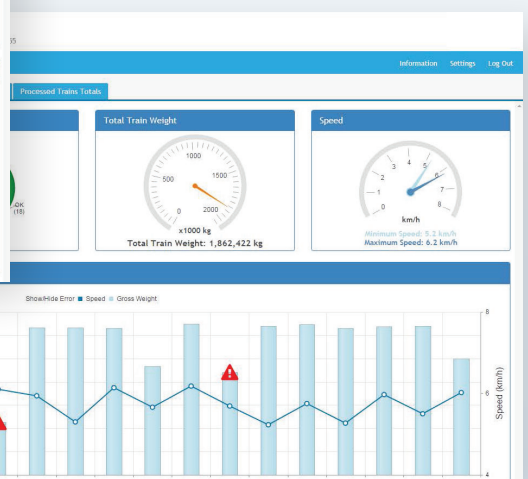
Runs on Windows 10, leveraging the power of the latest SQL technology for maximum efficiency and performance



Archive weighing data permanently to enable future reference and analysis



I-LINE 2 is the world's leading train weighing reporting system, making it the perfect choice for rail freight operators seeking reliable, accurate performance.



For more information or to request a demo, please contact Railweight at:

+44 (0) 845 246 6714

sales@railweight.co.uk

www.averyweigh-tronix.com/railweight