



Portable, in-motion axle weighing.

Technical Specification

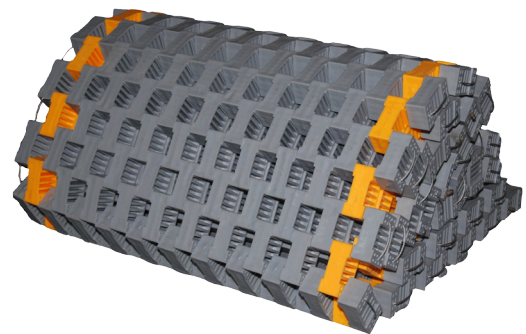
DESCRIPTION

The LS630 weigh-in-motion axle weighers provide a portable weighing solution that dynamically or statically reports axle and gross vehicle weight.

Portable weigh-in-motion allows authorities or fleet operators to quickly monitor, screen vehicle gross or axle loads where a permanent weigher is not available. Consisting of a wireless indicator, two scales and roll-up ramps, the system is fully portable in the boot of an estate vehicle and can be set up by 1 or 2 people in under 15 minutes.

The portable WIM (weigh-in-motions) technology will deliver accuracy of 2% to 3% dynamically at speeds of up to 6 kph and $\pm 0.5\%$ statically. This provides authorities or fleet operators with a fast, efficient and cost effective solution to protect against overloaded axles or gross weight, ensuring compliance of the highway.

The system is Class III NTEP Certified for direct enforcement in static weighing mode.



FEATURES AND BENEFITS

Dynamic - Weigh vehicles dynamically at speeds of up to 10 kph.

Portable - Weigh anywhere, anytime.

Optimise Vehicle Loads – Maximise revenue and shipping costs.

Avoid Overloading – Take the guess-work out of vehicle packing.

Manage Compliance – Set your business up to comply with highway legislation.

PT20 INDICATOR

The PT20 indicator unit provides the ability to process weight related data. It is self-enclosed with a thermal printer in a rugged, all-weather case for use in even the most remote locations. The indicator provides readings for Axle Weights, Gross Weight, Vehicle ID & Class for ticketing and reporting.

This PT20 indicator will display and save complete vehicle records when interfaced with a pair of LS630 scales. Wheel weights, axle weights, GVW, axle spacing, and vehicle speed are recorded and can be printed onto a ticket. The results are displayed on the 5.7" graphic LCD and the indicator can store up to 1500 weigh records.

The data can be exported to software/CSV or to other devices via USB flash drive or RS232.



SPECIFICATIONS

General

Operating Speed (dynamic mode):

1-10 kph

Dynamic Accuracy (GVW):

2-3% at 6 kph

Static Accuracy: +/-0.5% of

verified gross weight or 1 display graduation, whichever is greater

Calibration Interval: 6-12 months

IP Rating: IP67

Operating Temperature: -10°C to

+40 °C (+14°F to +104°F)

Dynamic Pads

Capacity: 15,000 kg x 20 kg per pad / 30,000 kg

Dimensions (weighing area):

380mm x 780mm (15 in x 30.7 in)

Dimensions (overall):

405mm x 1025mm (16 in x 40.3 in)

Weight: 31 kg

Batteries: 4 alkaline 'AA' cells

Battery Life: 50 hours (typical)

Standby Mode: Yes

PT20 Indicator

Controls

Keys: 41 control keys

Display: 145 mm (5.7") graphic LCD with backlight

Power

Batteries: - 6 'D' cell alkaline or NiMH rechargeable cells

Battery Life: 40 to 200 hours (dependent on system detail, printer, and back light use)

Auto shut off / Low battery alert: Yes

Time/Date battery: (1) CR2032 Lithium button cell

Outputs

Output: USB, RS485/ANALOG, and USB Flash Drive

Relay Output: 2 outputs, each with C/NO/NC contacts, 5A @ 250VAC or 30VDC

Analog Output: (16-bit): 0-10V, 4-20mA, 0-5V, +/-5V, +/-10V, 0-20mA

Data Storage

Capacity: Up to 1500 weigh records

Data Recall: All stored records can be recalled to view or print

Data Export: All records can be exported via USB, RS232, or USB flash drive

Environment

Casing: Hardened case rated IP67 when closed, IP52 when opened and operational

Temperature: Operating -20 C to 60 C (printer 0 C to 50 C)

Radio

Radio Frequency: ISM 2.4GHz, 802.15.4 DSSS*

License Requirements: None. Pre-approved US/FCC, CAN/IC, EUR/CE

Range: 150' / 45m line of sight, reduced with obstructions

Product Code

System Part Number: AWT05-055249

Avery Weigh-Tronix

www.averyweigh-tronix.com

Avery Weigh-Tronix is an ITW company



Avery Weigh-Tronix is a trademark of the Illinois Tool Works group of companies whose ultimate parent company is Illinois Tool Works Inc ("Illinois Tool Works"). Copyright © 2016 Illinois Tool Works. All rights reserved. This publication is issued to provide outline information only and may not be regarded as a representation relating to the products or services concerned. This publication was correct at the time of going to print, however Avery Weigh-Tronix reserves the right to alter without notice the specification, design, price or conditions of supply of any product or service at any time.

LS630_Axle Weighers_spec.indd
V1_0516