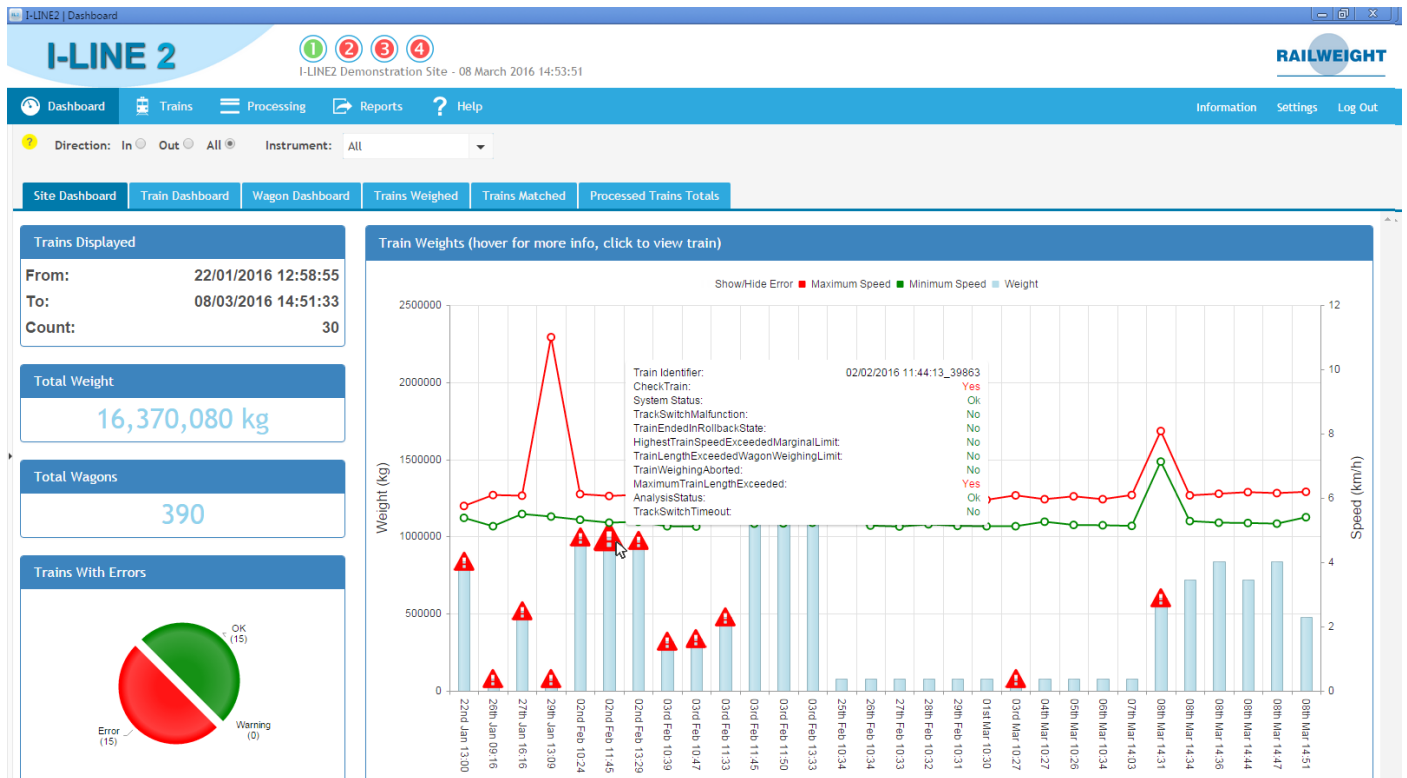


I-LINE2

advanced train weighing systems



I-LINE2 is a data management system designed for rail freight operators, to report on bulk and containerised rail shipments.



I-LINE2 Site Dashboard

Overview:

The I-LINE2 data management software displays real-time train weight data as it is captured by Railweighth's track-based weighing systems. The user friendly interface provides a fast visual representation of data to allow the user to quickly analyse their freight operation across single or multiple sites. Weight information can be displayed in tabular and graphical format and can be exported in .xml files for use with third party management systems.

Inventory Management:

Effectively manage raw material inventory across multiple sites of your distribution network by storing detailed weights of commodities as they enter or leave by train.

Train Loads:

The train dashboard gives a detailed visual overview of the train weight information, with errors being quickly identified and flagged with the system's red and green colour coding. Individual wagon information is just one click away,

featuring a full wagon diagram to help identify areas of overload and imbalance.

Monitoring Imbalance and Overloading:

I-LINE2's interactive wagon display visually alerts the user to overloads and over-speeds as well as imbalances between bogies, axles and wheels, so at a glance the user can identify problems and take corrective action.

Safety:

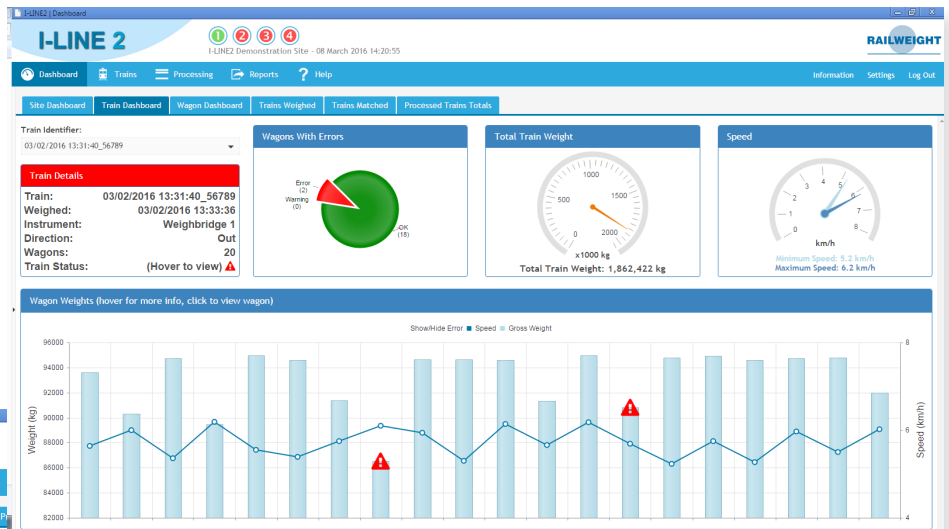
Ensure the train is loaded safely with even balancing to prevent derailment. Use the imbalance and overloading dashboard to see at a glance if your train is safe to travel.



Key Features

- Train dashboard displays detailed visual alerts.
- Simple navigation to detailed wagon information.
- Automatic alerting and reporting by email or SMS on certain events (subject to setup).
- Allows for manual, semi-automatic and fully-automatic operation.
- Real-time reporting and dashboard updates.
- Operates in tare, gross and net weighing modes.
- Automatically incorporates train identification numbers (via AVI/RFID).
- Allows manual entry of vehicle data if required.
- Allows manual entry of any other information you wish to associate with a weight (up to three user definable fields).
- Automatic printing of reports on events, such as when a train is weighed.
- Support for multiple client devices (subject to setup).
- Support for multiple weighing instruments.
- Support for IP camera feeds to be integrated into the Instrument Control Panel (subject to setup).
- Fully translatable into most languages.

I-LINE2 Train Dashboard - Imbalance Errors Highlighted



I-LINE2 Wagon Dashboard: Detailed imbalance errors highlighted

For more information call:

+44 (0)845 246 6714

Foundry Lane, Smethwick, West Midlands, B66 2LP

Tel: +44 (0) 845 246 6714
Fax: +44 (0) 845 246 6715

Email: sales@railweight.co.uk
Internet: www.averyweigh-tronix.com/railweight



Railweight is part of Avery Weigh-Tronix.

Avery Weigh-Tronix is a trademark of the Illinois Tool Works group of companies whose ultimate parent company is Illinois Tool Works Inc ("Illinois Tool Works"). Copyright © 2016 Illinois Tool Works. All rights reserved. This publication is issued to provide outline information only and may not be regarded as a representation relating to the products or services concerned. This publication was correct at the time of going to print, however Avery Weigh-Tronix reserves the right to alter without notice the specification, design, price or conditions of supply of any product or service at any time.