



Avery Weigh-Tronix

A guide for shippers to aid compliance with the Safety of Life at Sea (SOLAS) container weight verification amendments.



SOLAS

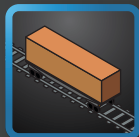
Shipper's Guide

What Are You Weighing?

Avery Weigh-Tronix

I Am Weighing The Packed Container

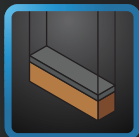
METHOD 1: Weighing the packed container using calibrated and certified equipment.



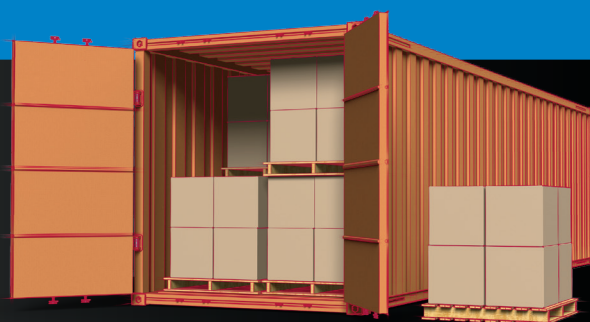
Rail Transporters



Hauliers & Freight Forwarders



Ports



I Am Weighing The Component Parts

METHOD 2: Weighing all packages and cargo items, including packing materials and the tare weight of the container, then adding the sum of all weights together to provide a verified weight.



Manufacturers



Packers



Consolidators



Exporters



SOLAS: What the Changes Mean for You

Changes to the SOLAS shipping treaty mean all shipping container weights must be properly verified by an approved method of weighing. Avery Weigh-Tronix have designed this simple guide to help you understand the method and equipment available to achieve compliance.

Container weight verifications can be achieved in two ways. Either method requires that your scales be maintained and calibrated on a regular basis to ensure weighing accuracy.



WEIGHBRIDGE

- › In/out weighing
- › Avoid overloading penalties
- › Maximise vehicle capacity and fuel efficiency
- › Legal-for-trade weighing of entire vehicle

AXLE WEIGHING

- › Static and in-motion weighing
- › Avoid overloading and uneven loads
- › Improve compliance and health and safety

TRAIN WEIGHING

- › Static or in-motion weighing of rail cars or wagons
- › Easily installed on existing track
- › Monitor and record deliveries into and out of site

CONTAINER JACKS

- › Attach, weigh and pack away in under 5 minutes
- › Confirm load distribution and share weight data instantly
- › 50kg resolution/division size

FORKLIFT SCALE

- › Extremely robust, compact weighing solution
- › No need to stop and unload at a scale
- › Real time data acquisition and transfer via bluetooth and wireless

FLOOR & BENCH SCALE

- › Ideal at goods in/out
- › Weighs at very high accuracy
- › Floor scale with optional ramps for drive on capability



Who does the new regulation amendments affect?

The SOLAS regulation amendments have effects through-out the supply chain, meaning that shippers, freight forwarders, vessel operators, and terminal operators will all need to establish policies and procedures to ensure the implementation of this regulatory change. The shipper (or by arrangement of the shipper, a third party) has a responsibility to verify the gross mass of the container. The 'shipper' is the person whose name appears on the bill of lading or the transport document and will be legally responsible for the declaration of the Verified Gross Mass (VGM) of the loaded container.

Sales

Avery Weigh-Tronix can provide a wide range of equipment to ensure your business is meeting SOLAS weighing compliance. Our solutions range from bench and platform scales to container jacks and weighbridges for road or rail, all of which can be linked to data management solutions to help you accurately record the VGM of your shipments.

Hire

If you are looking for less capital investment but still require equipment to comply with SOLAS, Avery Weigh-Tronix have a wide range of products available for hire for both short and long term periods.

All products are the latest specification and include everything from bench and platform scales to a fleet of 50 vehicle weighbridges.

When hiring a scale from Avery Weigh-Tronix you will also benefit from the expertise of our 150-strong national service team, who will ensure your equipment is kept running smoothly and efficiently.

Service

As part of the SOLAS regulation amendment, there is a requirement for all weighing equipment used to be maintained and calibrated. Avery Weigh-Tronix is able to provide equipment maintenance, calibration and certification in line with any national accreditation scheme and allow your business to achieve 'Accredited Shipper' status. Our national team of 150 service technicians are available to install and maintain your equipment and provide regular calibration, service and repair.

We understand that operation efficiency and equipment up-time is key to the success of your business. Focusing on regular preventative maintenance keeps your equipment working at maximum efficiency and reduces the likelihood of costly emergency breakdowns.

Highly trained service technicians will work with you to identify potential issues before they arise to ensure that your equipment is running reliably and accurately. We will ensure that your equipment is both accurate and compliant.

About Avery Weigh-Tronix

Avery Weigh-Tronix is one of the world's leading suppliers of weighing solutions. With over 250 years of experience, the company designs, manufactures, installs and services a broad range of high quality industrial products and weighing systems.

Avery Weigh-Tronix are members of the International Cargo Handling Coordination Association (ICHCA).

More online

Download our free guide:
*SOLAS – A Guide to Container
Weighing Regulations* at:

<http://www.averyweigh-tronix.com/solas>



Avery Weigh-Tronix

www.averyweigh-tronix.com

Avery Weigh-Tronix is an ITW company



Avery Weigh-Tronix is a trademark of the Illinois Tool Works group of companies whose ultimate parent company is Illinois Tool Works Inc. ("Illinois Tool Works"). Copyright © 2016 Illinois Tool Works. All rights reserved. This publication is issued to provide outline information only and may not be regarded as a representation relating to the products or services concerned. This publication was correct at the time of going to print, however Avery Weigh-Tronix reserves the right to alter without notice the specification, design, price or conditions of supply of any product or service at any time.

SOLAS-Shippers-Guide_L_UK_501568.indd (C&D)
V1 AWT35-501568